

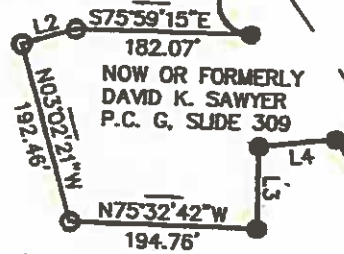


NOW OR FORMERLY
ENTERIDGE PROPERTY
D.B. 125, PAGE 496

1,801,085 sq. ft.
41.35 acres
BY COORDINATE METHOD

Ponderosa
Mobile Home
Park

Area
Rezoning Requested



U.S. HIGHWAY 158 (100' R/W)

→ College Way

(E)

(C)

TL5

707.50'

$105^{\circ}W$

459.50'

$N26^{\circ}18'05''W$
132.00'

$N172^{\circ}105''W$

$N22^{\circ}18'40''W$
199.17'

$S75^{\circ}39'15''E$
182.07'

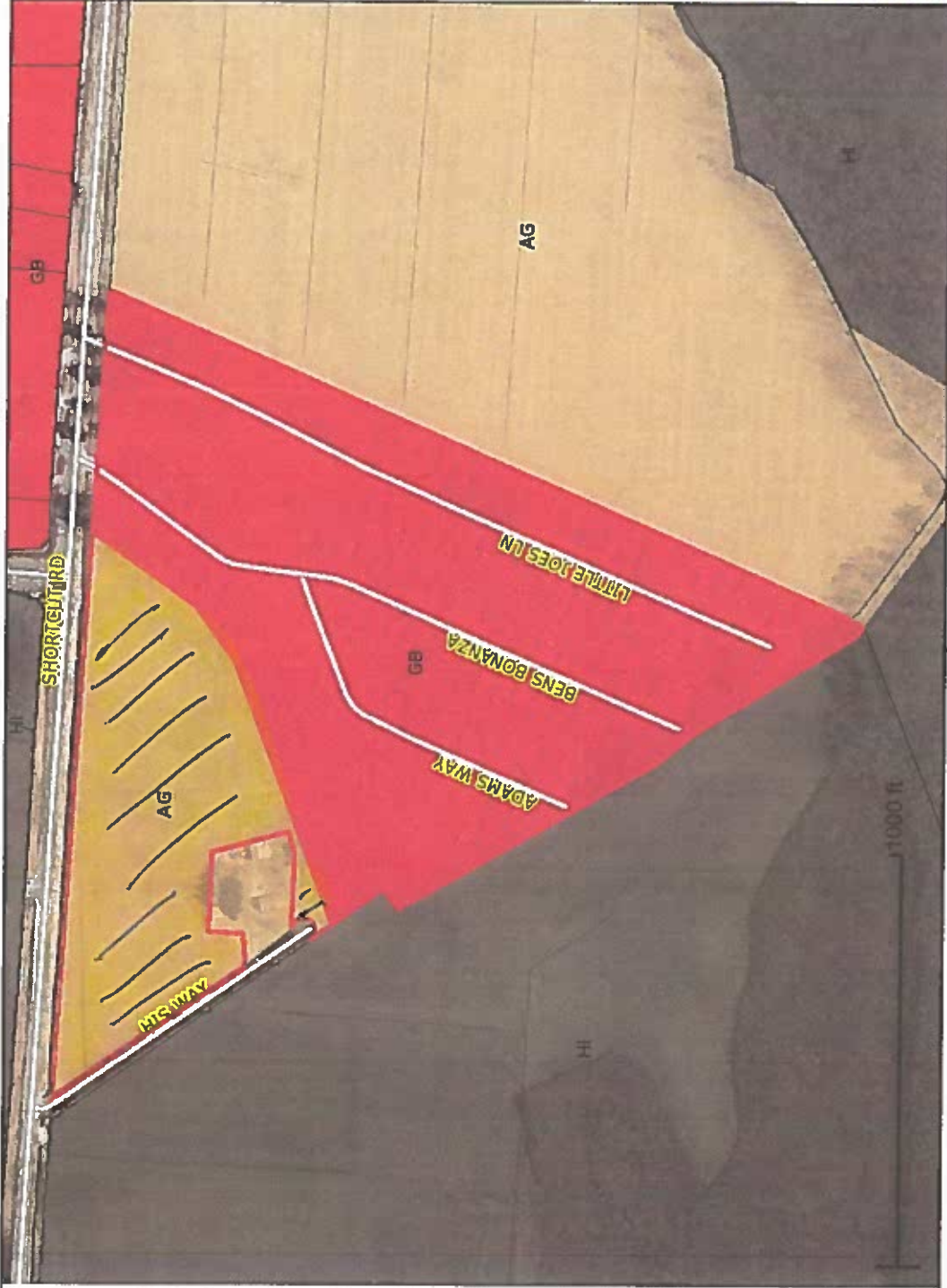
$N05^{\circ}02'21''W$
192.46'

$N75^{\circ}32'42''W$
194.76'

$N22^{\circ}20'11''W$

369.00'

Currituck County GIS Online Mapping



Communities

- Ayolett
- Barco
- Coinjock
- Corolla
- Currituck
- Olivia Woods
- Grandy
- Herbinger
- Jervisburg
- Knotts Island
- Maple
- Moyock
- Point Harbor
- Poplar Branch
- Powell Point
- Shawboro
- Silgo
- Waverly

County Boundary

- State
- County

Streets

- Wright Memorial Bridge

Major Streets

- Arterial_Principal
- Arterial_Major
- Collector_Major

Ferry Route

- Ferry Route

Parcel Land Hooks

- Parcel

Official Zoning (Base Dist)

- AG
- SFM
- SFO
- SFI
- SFR
- MXR
- GB
- LB
- LI
- HI
- PO-M
- C-HI
- C-MXR
- C-SFM
- C-GB

Currituck County

Aerial Photography (2016)

- Red: Band_1
- Green: Band_2
- Blue: Band_3

This map should be used for general reference purposes only. Currituck County assumes no legal liability for the information shown on this map.

Currituck County GIS
 (252)232-2034
www.co.currituck.nc.us/Geographic-Information-Services.cfm